

California Callers in 2018

to the National Suicide Prevention Lifeline



In 2018, the Lifeline received
2.5 million
crisis calls from across the United States

306,851
calls were from California

Of the **306,851** callers, **70,717 individuals** pressed "1" to be transferred to the Veterans Crisis Line and **8,605** pressed "2" for Lifeline's Spanish Language Line.

Ideally, the remaining 227,529 calls in 2018 would have been answered by Lifeline call centers in California.

Of those, **only 193,141 calls (85%)** were able to be **answered in-state**.

Which meant **34,388** callers in crisis **were unable to be answered** by a California call center.

Established in 2005

the National Suicide Prevention Lifeline is the nation's most recognized suicide and mental health crisis line.

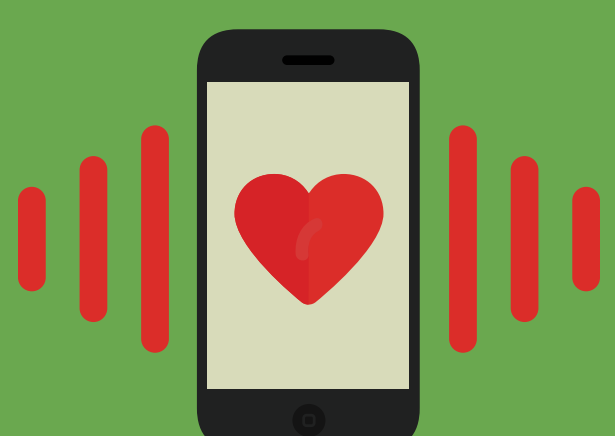
The Lifeline is not one large national call center. Instead, it is a network of 170 independently operated, independently funded local, regional, and state-level call centers. **Currently there are 12 Lifeline-affiliated centers in California.** They have the critical expertise and linkages to local resources that callers in crisis deserve.

To participate in the Lifeline network, centers operate to the highest standards of suicide care. They do an incredible job of de-escalating crisis situations, decreasing emotional distress, and reducing suicidality.

In the event local centers are unable to answer, **the Lifeline re-routes calls to backup centers in our network** (both in and out-of-state).

Why is this?

How can I help?



+62%

The number of Lifeline calls that needed answering by California call centers increased 62% from 2016 to 2018

The Lifeline is administered through Vibrant Emotional Health and funded by the U.S. Substance Abuse and Mental Health Services Administration



In 2019, there are **12** Lifeline network call centers in California



- 📍 Kern Behavioral Health & Recovery Services Hotline (Bakersfield)
- 📍 Suicide Prevention of Yolo County (Davis)
- 📍 Santa Clara County Suicide and Crisis Services (San Jose)
- 📍 Crisis Support Services of Alameda County (Oakland)
- 📍 Wellspace Health (Sacramento)
- 📍 Suicide Prevention & Community Counseling (San Rafael)
- 📍 StarVista (San Carlos)
- 📍 Suicide Prevention Center, Didi Hirsch Mental Health Services (Century City)
- 📍 San Francisco Suicide Prevention (San Francisco)
- 📍 Central Valley Suicide Prevention Hotline- Kings View (Fresno)
- 📍 Optum (San Diego)
- 📍 Contra Costa Crisis Center (Walnut Creek)

Why were only 85% of 2018's Lifeline calls in California answered in-state?

Lifeline call centers in California set the hours and coverage areas for when and where they will take Lifeline calls. **They do this based on funding and staffing levels.**

Most Lifeline-affiliated call centers in the U.S. (including in California) answer calls on other helplines in addition to the Lifeline. **Despite their very best efforts, call volume can, at times, strain center capacity and callers may hang up while they wait for the next available counselor.**

When local call centers are unable to answer, the Lifeline pulls the call back and sends it out of state and into our national backup center sub-network.

When calls are re-routed to centers out-of-state, California callers in crisis wait longer, they receive fewer linkages to effective local care, and are more likely to abandon their calls.



Proven effective; needing support

Research shows the Lifeline is an effective, life-saving safety net for those in crisis (Gould et al., 2007, 2013, 2015, 2017; Ramchand et al., 2016). According to a 2018 survey of Lifeline centers, **almost 98% of the crisis calls are de-escalated such that costly, highly-restrictive responses from law enforcement and emergency medical services are not necessary.**

The Lifeline is federally funded to manage the call routing, best practice standards, public messaging, and technical assistance for its network. However, **the funds that sustain our network's centers come from state, county and local sources.** Many centers struggle to find enough funding to operate and grow.

These call centers are key components of California's behavioral health systems because they represent an entry point into other levels of coordinated care. They provide critical services for California residents at serious risk, especially those with nowhere else to turn.

Current California Lifeline centers need expanded support.

You can advocate for them.



Please join the cause!

Reach out to your local centers and decision-makers in California.

Learn more about the Lifeline as well as how to contact your centers in California by visiting:
<http://suicidepreventionlifeline.org/our-network/>